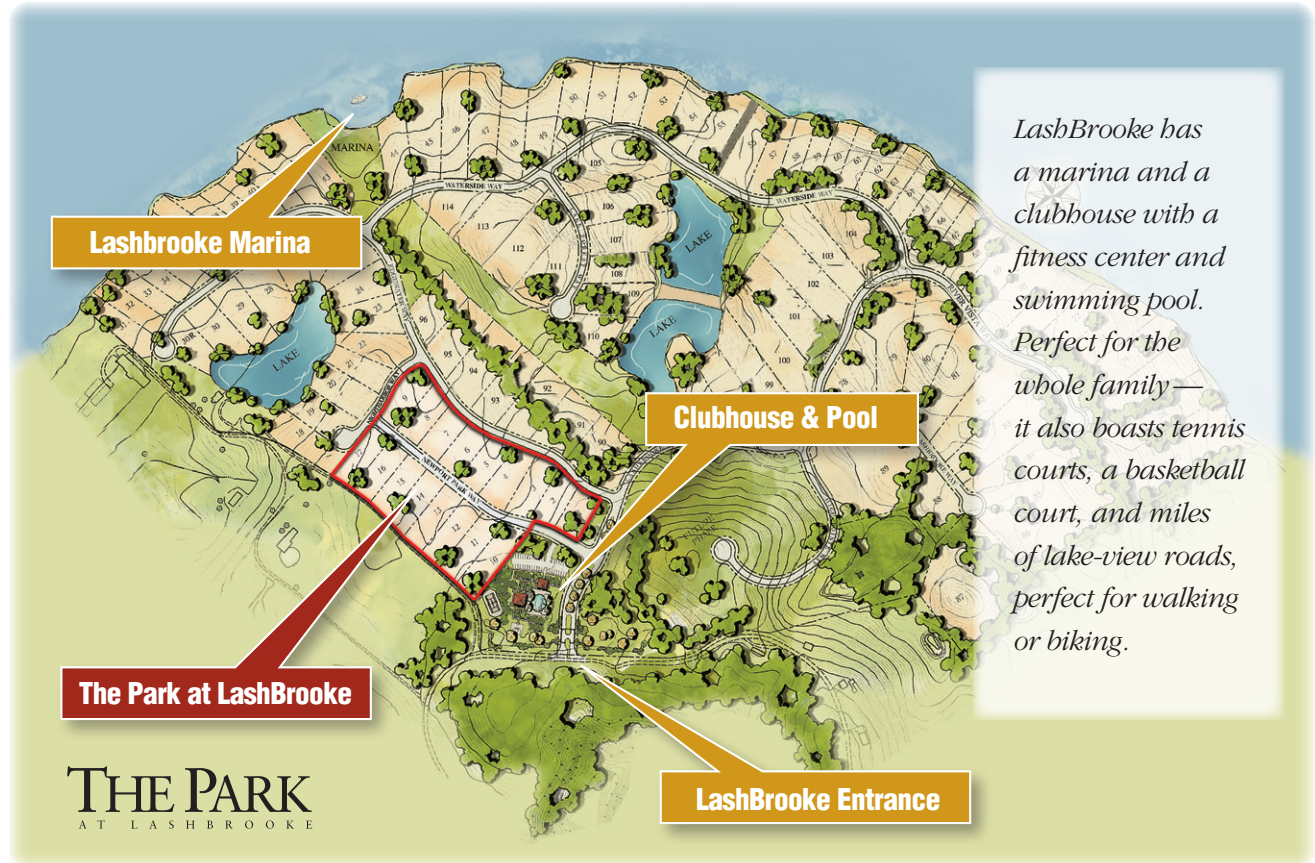


# THE PARK

AT LASHBROOKE

# Lash Brooke

PRIVATE LAKEFRONT COMMUNITY



**A**s a unique neighborhood within the Lashbrooke community, The Park offers practical, right-sized, upscale home solutions, sidewalks, street lights, and maintenance free lawn care ... perfect for a family in any stage of life.

OFFERED BY  
**BEAVER**  
HOME BUILDERS  
*Fine Homes and Renovations*

865-388-4185

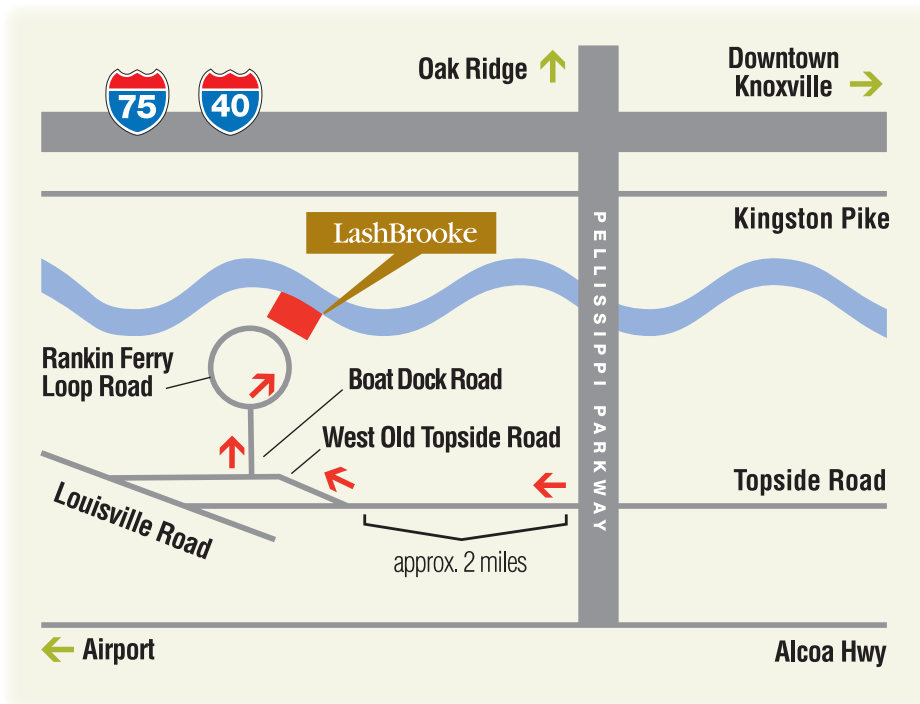




**THE PARK**  
AT LASHBROOKE

*LashBrooke*  
PRIVATE LAKEFRONT COMMUNITY

## LashBrooke is minutes from everywhere.



*LashBrooke is one of the most accessible lakeside developments in the Knoxville area. Situated on some of the finest lakefront property in the Southeast, LashBrooke is just 3.5 miles from Pellissippi Parkway.*



The LashBrooke Community is the last convenient upscale residential lakefront opportunity in the Knoxville area. Providing a remote and quiet pastoral family setting only 11 minutes from the Publix and Kroger at Nortshore Drive, Lashbrooke feels out of the way, but is remarkably convenient to everything.

<b>Lashbrooke to Turkey Creek:</b>	<b>15 miles</b>
<b>Lashbrooke to UT:</b>	<b>13 miles</b>
<b>Lashbrooke to Tyson McGee airport:</b>	<b>8 miles</b>
<b>Lashbrooke to Publix:</b>	<b>10 miles</b>

OFFERED BY  
**BEAVER**  
HOME BUILDERS  
*Fine Homes and Renovations*  
**865-388-4185**



### The Park Amenities

- Maintenance free living
- Sidewalks with street lights
- Generous lot sizes, close to 3/4 acre

### Lashbrooke Amenities

- Gated community
- Community Marina
- Club house with fitness center
- Pool with outdoor pavilion
- Tennis court
- Children's play area
- Basketball Court

### Home Features @ The Park

- Custom-designed homes
- Exteriors with brick, stone, per plan
- Hardie siding and stucco, per plan
- Covered porches and courtyard patios
- Custom mahogany front doors
- Aluminum clad high efficiency windows
- High efficiency HVAC systems
- R-38 insulation in ceilings
- R-19 insulation floors
- R-15 insulation in walls
- 3-car garages
- 50-year dimensional roof shingles
- Stained concrete driveways
- Extensive hardwood and ceramic tile
- Generous interior trim packages
- Professionally designed kitchens
- Stainless steel appliances

*LashBrooke is perfect for the whole family. The Community has a clubhouse with a fitness center, swimming pool, and entertainment pavilion. It also features tennis courts and a basketball court. Lashbrook is great for walking and biking with lake views.*

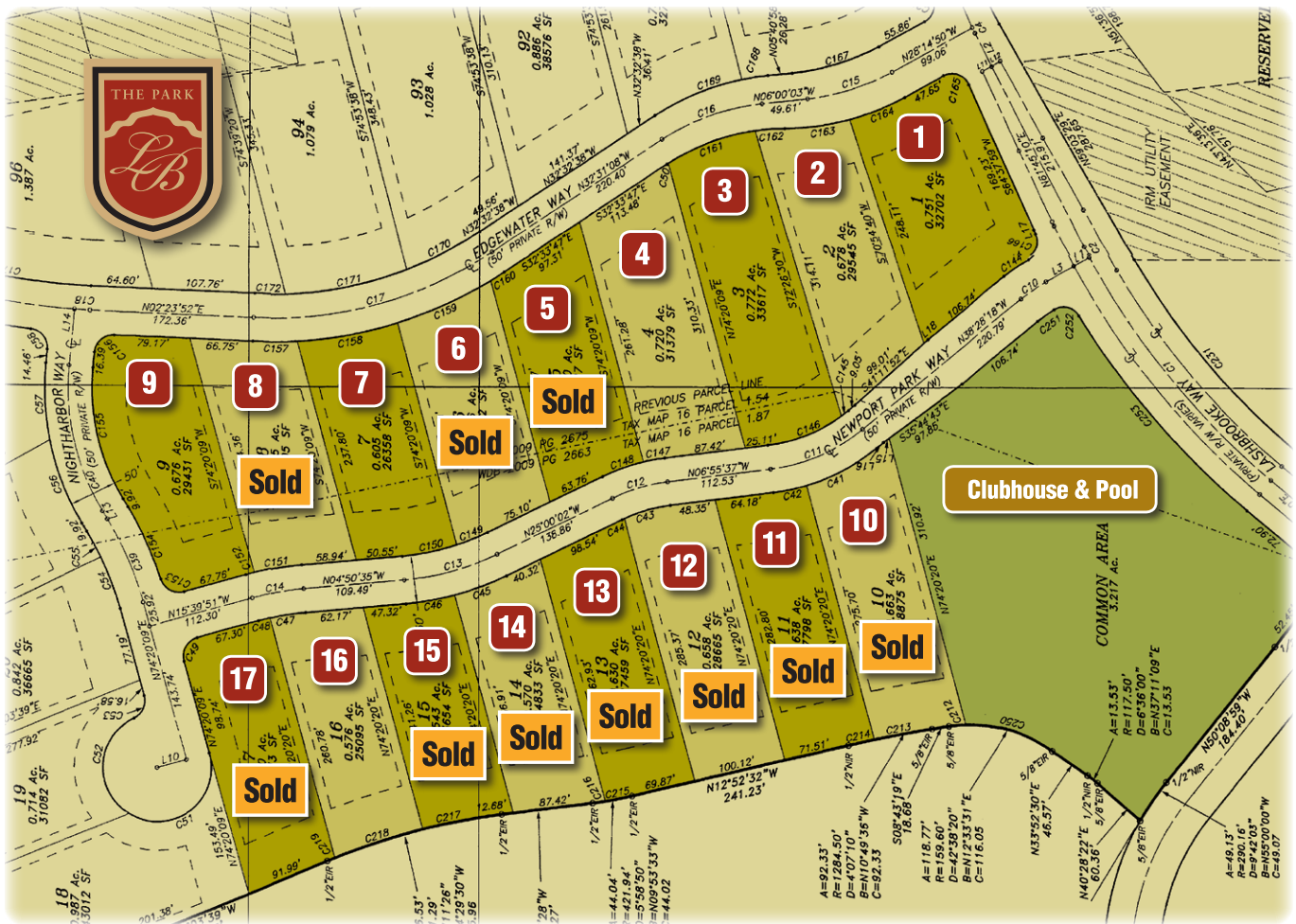
OFFERED BY

**BEAVER**

HOME BUILDERS

*Fine Homes and Renovations*

865-388-4185



# THE PARK

AT LASHBROOKE

Home plans custom designed for The Park

- Right-Sized homes on 1/2 to 3/4 acre lots
- Private courtyards for each home
- Outdoor fireplaces are a standard feature
- Maintenance free lawns



# THE BROOKSTONE



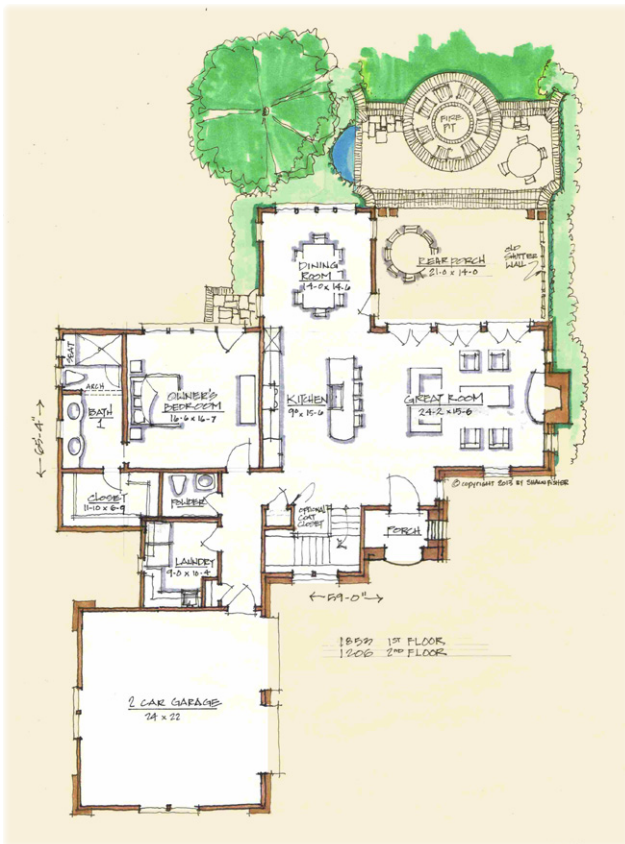
### The Park Amenities

- Maintenance free living
- Sidewalks with street lights
- Generous lot sizes, close to 3/4 acre

### Lashbrooke Amenities

- Gated community
- Community Marina
- Club house with fitness center
- Pool with outdoor pavilion
- Tennis court
- Children's play area
- Basketball Court

**THE PARK**  
AT LASHBROOKE



FIRST FLOOR



SECOND FLOOR

OFFERED BY  
**BEAVER**  
HOME BUILDERS  
*Fine Homes and Renovations*  
**865-388-4185**

# THE GLEDSTONE



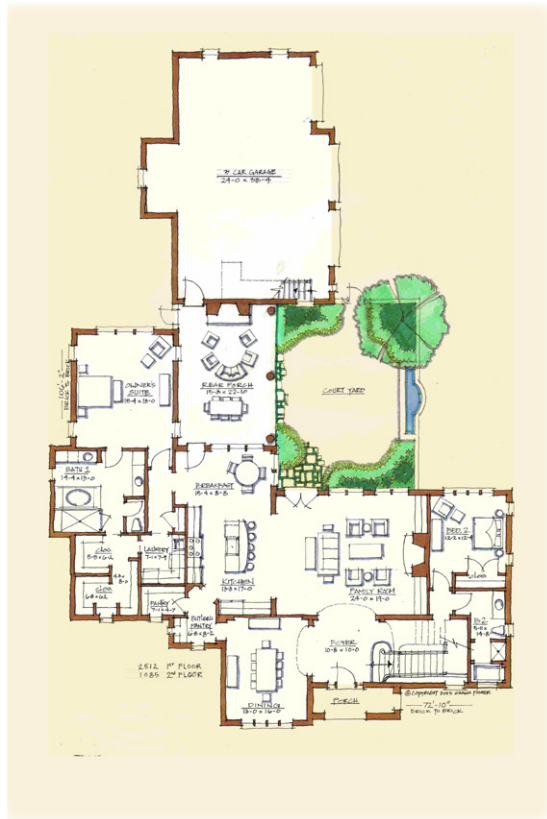
### The Park Amenities

- Maintenance free living
- Sidewalks with street lights
- Generous lot sizes, close to 3/4 acre

### Lashbrooke Amenities

- Gated community
- Community Marina
- Club house with fitness center
- Pool with outdoor pavilion
- Tennis court
- Children's play area
- Basketball Court

**THE PARK**  
AT LASHBROOKE



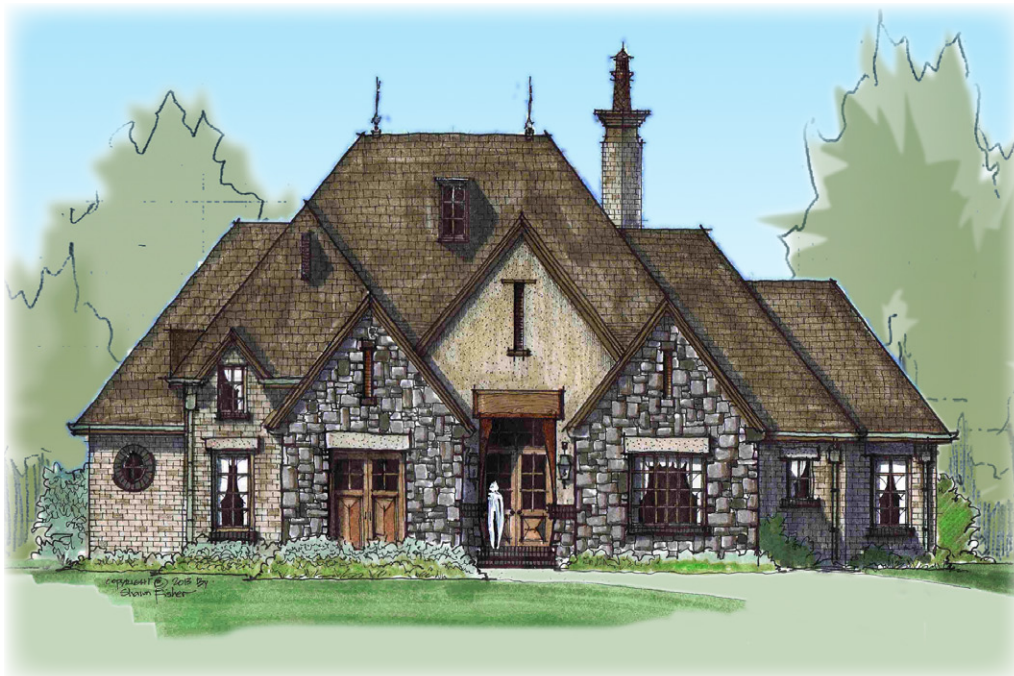
FIRST FLOOR



SECOND FLOOR

OFFERED BY  
**BEAVER**  
HOME BUILDERS  
*Fine Homes and Renovations*  
**865-388-4185**

# THE KAYLA



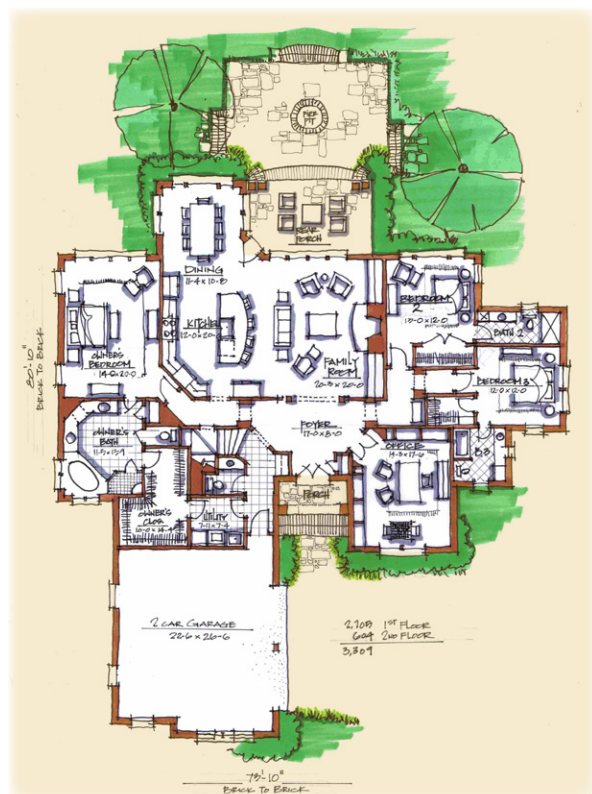
### The Park Amenities

- Maintenance free living
- Sidewalks with street lights
- Generous lot sizes, close to 3/4 acre

### Lashbrooke Amenities

- Gated community
- Community Marina
- Club house with fitness center
- Pool with outdoor pavilion
- Tennis court
- Children's play area
- Basketball Court

**THE PARK**  
AT LASHBROOKE



FIRST FLOOR



SECOND FLOOR

# THE SHEDFIELD



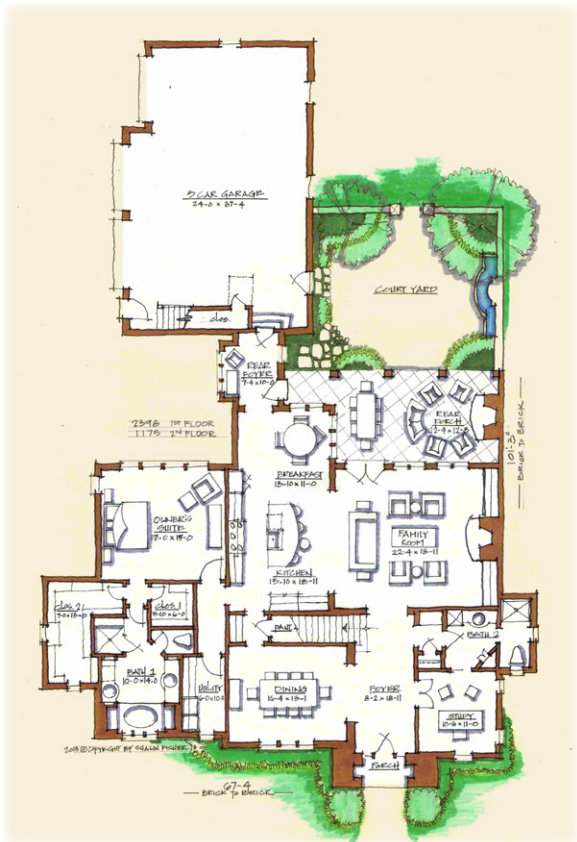
### The Park Amenities

- Maintenance free living
- Sidewalks with street lights
- Generous lot sizes, close to 3/4 acre

### Lashbrooke Amenities

- Gated community
- Community Marina
- Club house with fitness center
- Pool with outdoor pavilion
- Tennis court
- Children's play area
- Basketball Court

**THE PARK**  
AT LASHBROOKE



FIRST FLOOR



SECOND FLOOR

OFFERED BY

**BEAVER**

HOME BUILDERS

*Fine Homes and Renovations*

865-388-4185